

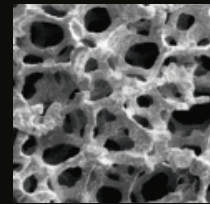
ALUMINIUM CNC

Lasting Quality - A process guarantee that the raw material in all aluminum parts retains its purity and integrity, even to an atomic level.

Scientific tests and studies have proven the far superior strength of components manufactured with **CNC Machining** as opposed to the traditional molding process.

CNC machining aligns the aluminum unidirectionally, ensuring it remains 100% compact, and thus much more resistant to **impact, fatigue and corrosion.**

structure
ALUMINIUM INJECTION



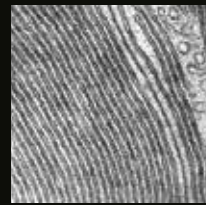
ROCKWELL HARDNESS TEST

INJECTION AL 40 - 50 HRB

MACHINED AL CNC 81 HRB

Procedure: The Rockwell test determines the hardness by measuring the depth of penetration of an indenter under a large load compared to the penetration made by a pre-load. In these tests it was proven that the CNC component is twice as resistant as the injection molded part.

structure
ALUMINIUM CNC



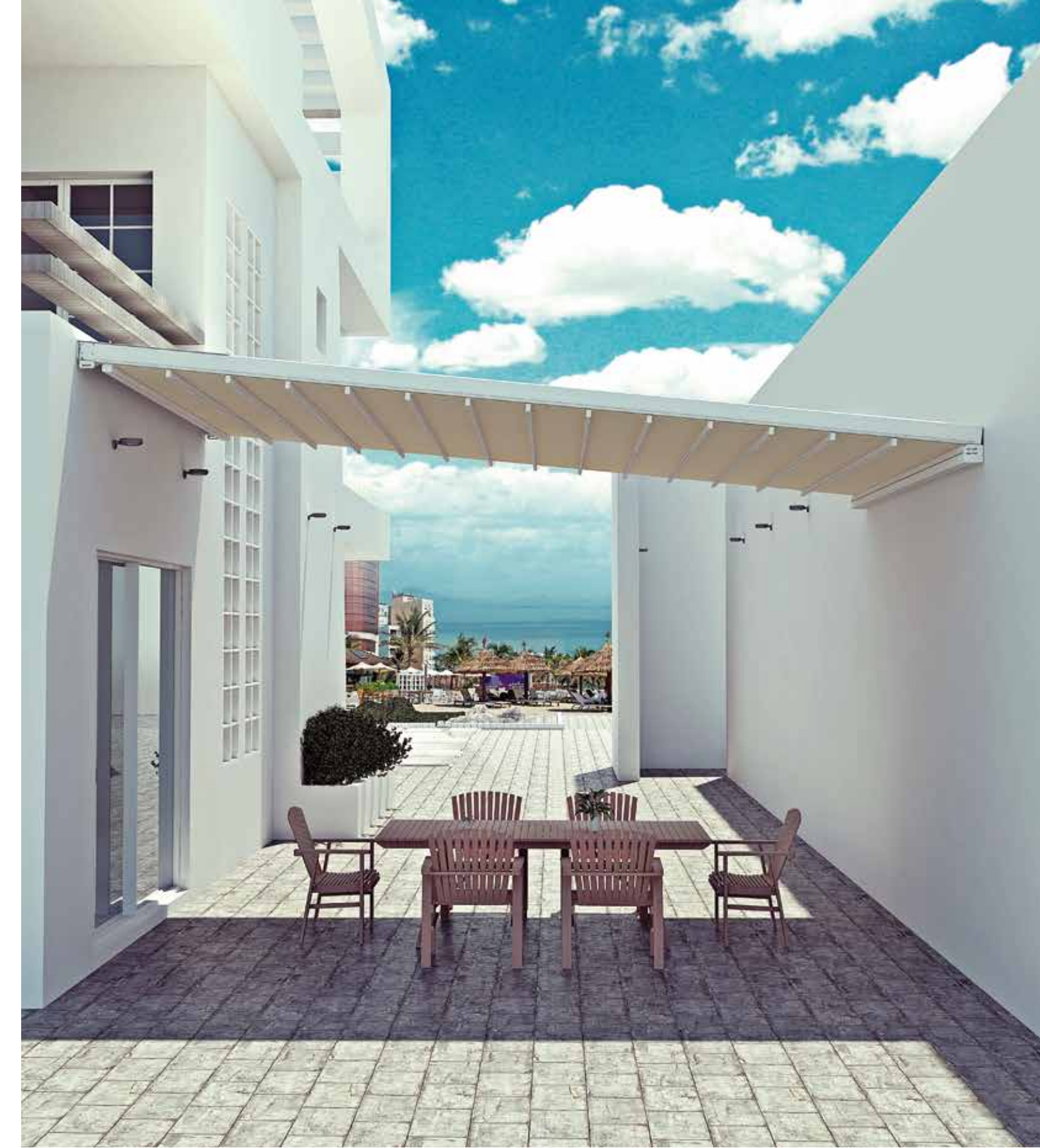
LASTING QUALITY
UNALTERED ALUMINIUM



WARRANTY
10
YEARS

A BRAND NEW **GENERATION** AWNINGS & PERGOLAS

by **nevaluz**



SAHARA  **ATAQUE**

SAHARA ATAQUE

The **ATAQUE** pergola thanks to its exclusive anchor, it can be fixed on both sides, regardless of the height. The special steel anchors for architecture allow for frontal or lateral anchorage.

Components, manufactured with **CNC Technology**, allows the **ATAQUE** to reach up to 7 metres between two walls, and it is therefore guaranteed in resistance and safety, achieving the Maximum possible classification, **Class 6**, according to the UNE 13561 standard.

A protective cover at the back prevents inclement weather from damaging the motorized system, ensuring the longevity of the product. A multitude of optional extras, colours and finishes gives space for creative design options, such as fitting the sides with the **Qatif drop blind** systems for even more protection from the elements.

ANCHORAGE FRONT OR SIDE

The special steel anchors allow the pergola to be installed between frontal and back walls, or between side walls, with no need for any columns or pillars.

ROOF INCLUDED

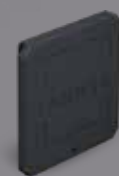
This pergola includes a specially designed protection cover, ensuring the protection of critical mechanisms, electric, electronic parts of the structure, ensuring longevity and minimizing maintenance.

QATIF AWNING INTEGRATION

The perfect complement to close the sides of your Dakhla space. It is designed to be easily hung from the horizontal profile, creating an integrated look. The cassette has large capacity, allowing drops of up to 5 metres.

FINISHES

Certified paint **QULICOAT, Class 2 (super-durable)**.



METALLIC GREY



OXIDÓN



WHITE, MATTE WHITE, TEXTURED WHITE



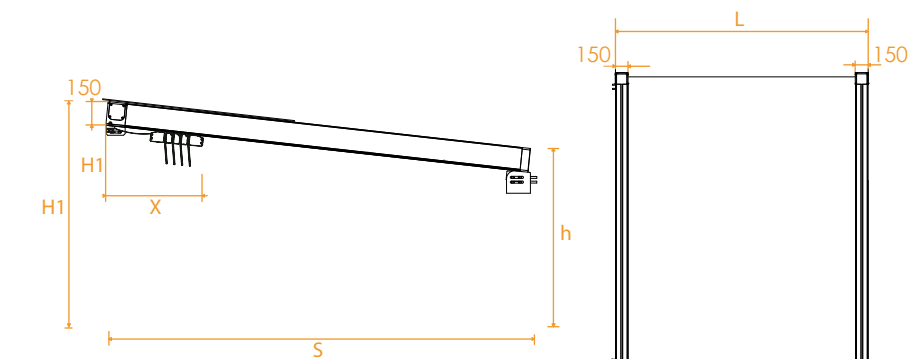
MORE FINISHES AVAILABLE ON REQUEST

TECHNICAL DETAILS

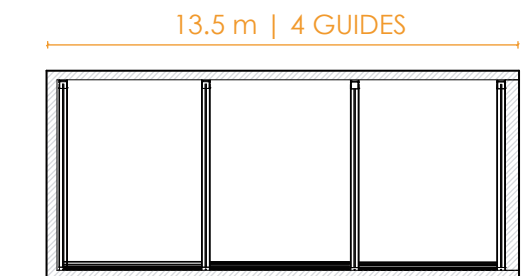
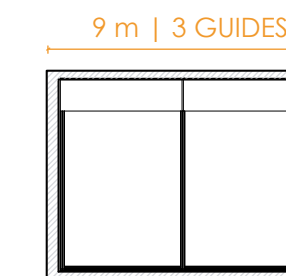
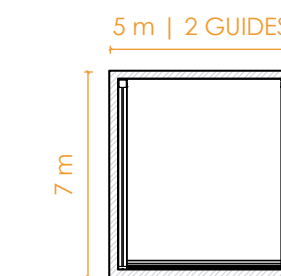
DIMENSIONS PROJECTION VIEW

Projection (S)	n° Profiles	X mm	Y mm
3000	4	662	300
4000	6	758	310
5000	8	854	320
6000	10	950	330
7000	12	1046	340

Contemplated for a separation of 50 cm between profiles.

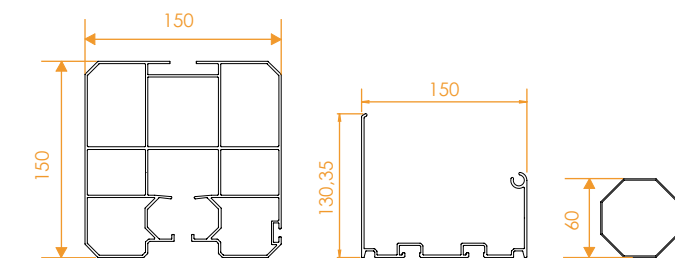


CONFIGURATIONS

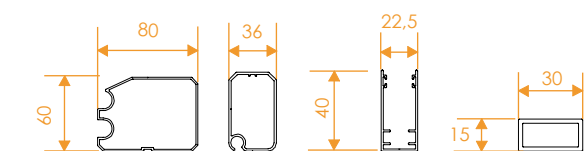


PROFILES

Structural Profiles



Support Profiles



COMPONENTS MACHINED ALUMINIUM

Due to CNC Machining, the resistance and quality of the components provide a level of structural strength that is unique in the industry, combined with the appeal of an integrated minimalist design.





WARRANTY
10
YEARS

A BRAND NEW **GENERATION** AWNINGS & PERGOLAS

by **nevaluz**

SAHARA  ATAQUE


LASTING QUALITY
UNALTERED ALUMINUM