

ALUMINIUM CNC

Lasting Quality - A process guarantee that the raw material in all aluminum parts retains its purity and integrity, even to an atomic level.

Scientific tests and studies have proven the far superior strength of components manufactured with **CNC Machining** as opposed to the traditional molding process.

CNC machining aligns the aluminum unidirectionally, ensuring it remains 100% compact, and thus much more resistant to **impact, fatigue and corrosion**.

structure
ALUMINIUM INJECTION



ROCKWELL HARDNESS TEST

INJECTION AL	40 - 50 HRB
MACHINING CNC	81 HRB

Procedure : The Rockwell test determines the hardness by measuring the depth of penetration of an indenter under a large load compared to the penetration made by a pre-load. In these tests it was proven that the CNC component is twice as resistant as the injection molded part.

structure
ALUMINIUM CNC



WARRANTY
10
YEARS

A BRAND NEW **GENERATION** AWNINGS & PERGOLAS

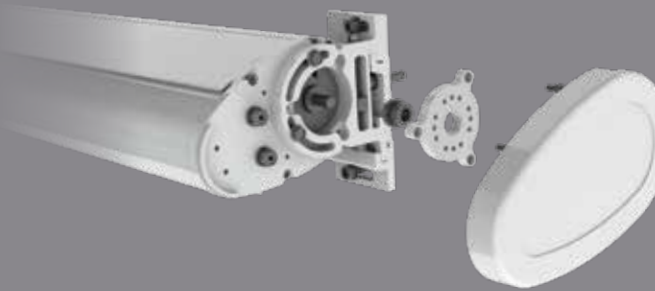
by **nevaluz**



SAHARA  **CHEBIKA**



MOTOR
SIDE ACCESS



NEW GENERATION AWNING

The new **CHEBIKA coffered awning** has been designed with a double function, first to offer protection from the sun and secondly to protect itself, keeping the canvas and the arms inside the recessed cassette, thus ensuring its continuous best performance and durability.

It is standard practice to allow for play between components in the arms, but thanks to the solidity of all the components that form part of the structure as a result of **CNC technology**, all components can fit snugly.

The result is that the articulated arms of CHEBIKA is able to maintain the tension on the canvas in any position, always causing it to look good as opposed to other systems where the canvass will sag in most intermediate positions.

Its solid anchoring and support system allows one to adjust the **inclination angle up to 80°**. CHEBIKA has an integrated and minimalist design, with multiple options and finishes, that allow you to easily adapt it to different architectural requirements.

COMPONENTS MACHINED ALUMINIUM

Due to CNC Machining, the resistance and quality of the components provide a level of structural strength that is unique in the industry, combined with the appeal of an integrated minimalist design.



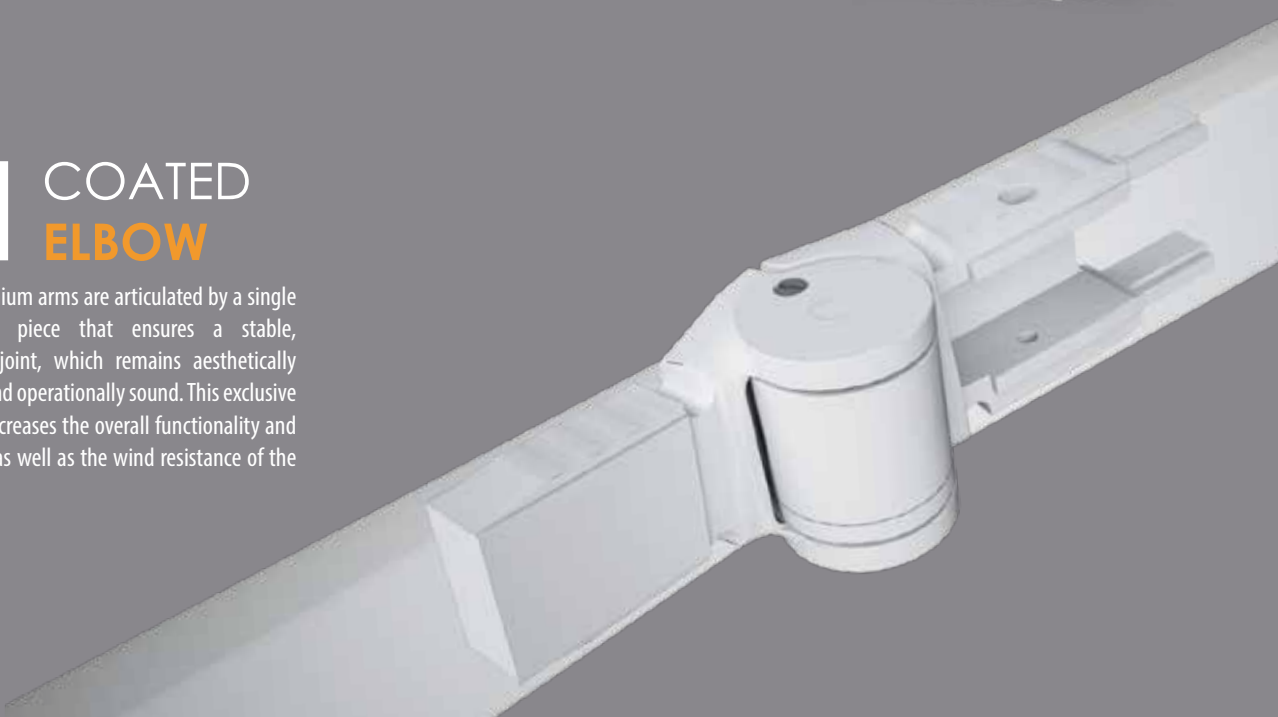
COMPACT AND CONTEMPORARY DESIGN

Inspired by architectural minimalism, this awning has simple, uncomplicated, aesthetically pleasing lines, whilst the technical design of the cover façade protects the canvas and other components from inclement weather conditions.



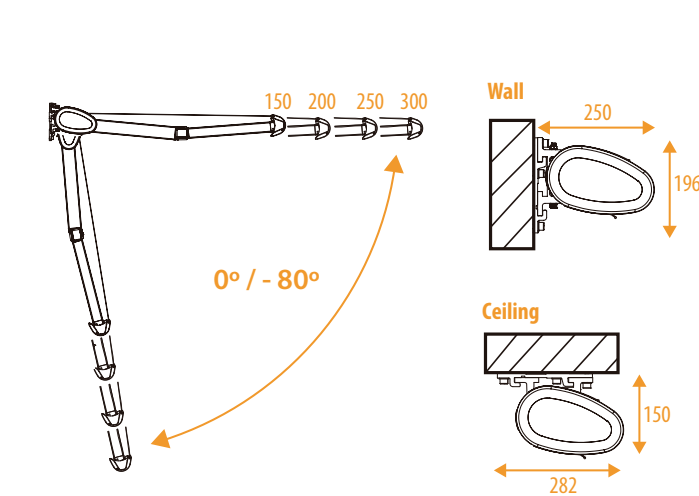
COATED ELBOW

The aluminium arms are articulated by a single aluminium piece that ensures a stable, protected joint, which remains aesthetically pleasing and operationally sound. This exclusive element increases the overall functionality and durability as well as the wind resistance of the CHEBIKA.

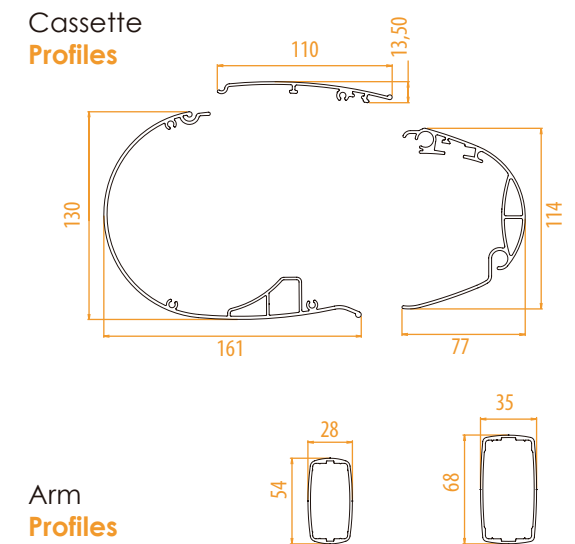


TECHNICAL DETAILS

INSTALLATION



PROFILES



ARM MEASURES TABLE

Chebika must have motor.

	Arm 1,50 m	Arm 1,75 m	Arm 2 m	Arm 2,25 m	Arm 2,5 m	Arm 2,75 m	Arm 3 m
Minimum width	1,830	2,070	2,310	2,550	2,830	3,070	3,310

FINISHES

The coating used is certified Qualicoat class 2 (super durable)



METALLIC GREY



OXIDON



WHITE, MATTE WHITE,
TEXTURED WHITE



MORE FINISHES
AVAILABLE ON
REQUEST





WARRANTY
10
YEARS

A BRAND NEW **GENERATION** AWNINGS & PERGOLAS

by **nevaluz**

