

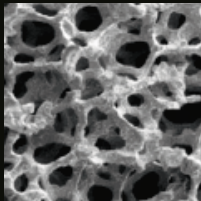
ALUMINIUM CNC

Lasting Quality - A process guarantee that the raw material in all aluminum parts retains it's purity and integrity, even to an atomic level.

Scientific tests and studies have proven the far superior strength of components manufactured with **CNC Machining** as opposed to the traditional molding process.

CNC machining aligns the aluminum unidirectionally, ensuring it remains 100% compact, and thus much more resistant to **impact, fatigue and corrosion**.

structure
ALUMINIUM INJECTION

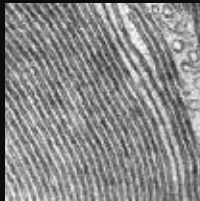


ROCKWELL HARDNESS TEST

INJECTION AL	40 - 50 HRB
MACHINING CNC	81 HRB

Procedure: : The Rockwell test determines the hardness by measuring the depth of penetration of an indenter under a large load compared to the penetration made by a pre-load. In these tests it was proven that the CNC component is twice as resistant as the injection molded part.

structure
ALUMINIUM CNC



WARRANTY
10
YEARS

A BRAND NEW **GENERATION** AWNINGS & PERGOLAS

by **nevaluz**



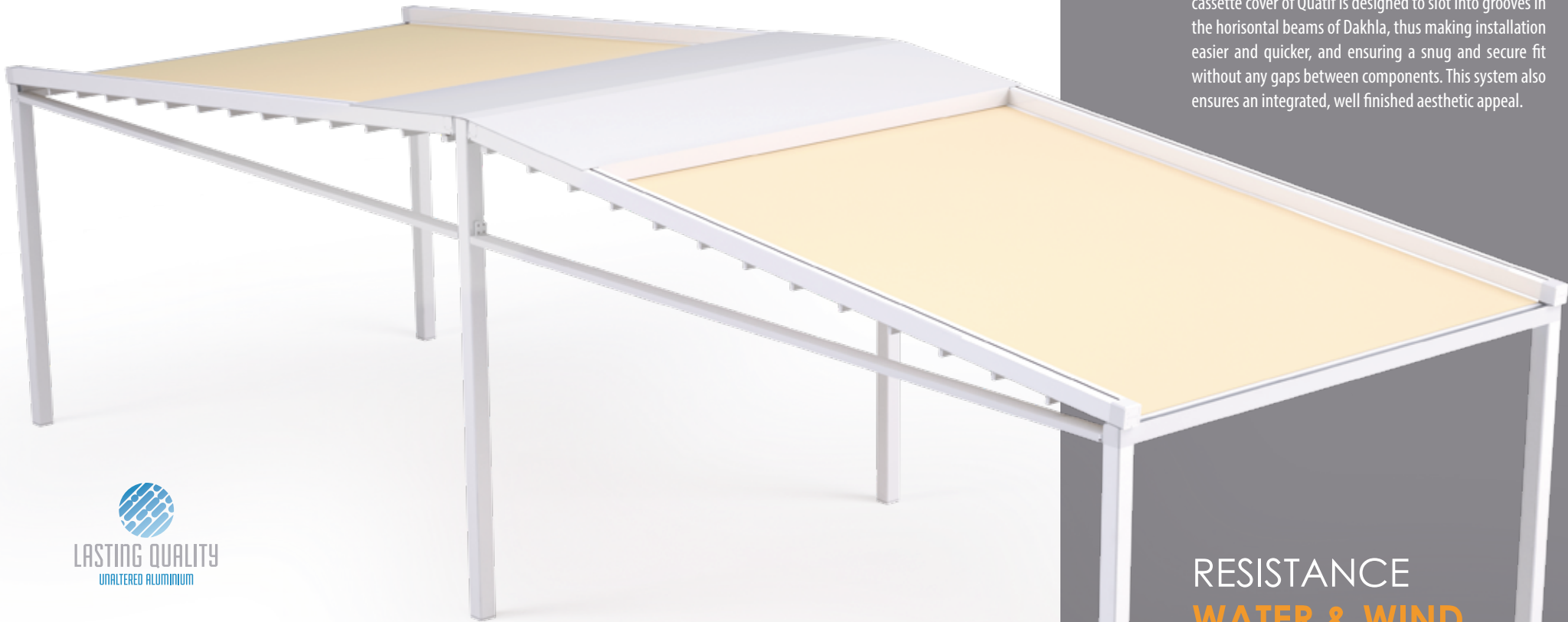
SAHARA  **DAKHLA PILARES DOBLE**

SAHARA

DAKHLA PILARES DOBLE

The **DAKHLA PILARES DOBLE** by Sahara, has been designed to protect large open spaces from the elements, when combined with the QATIF drop blinds.

Manufactured with **CNC Technology**, which guarantees its excellence and durability, allows the structure it to reach up to 18 metres in projection, and with three adjoining modules, up to 13.5 metres in width.



COMPONENTS

MACHINED ALUMINIUM

Due to CNC Machining, the resistance and quality of the components provide a level of structural strength that is unique in the industry, combined with the appeal of an integrated minimalist design.



It is ideal for creating large, protected spaces that can be enjoyed in any season of the year.

QATIF DROP-BLIND

INTEGRATION

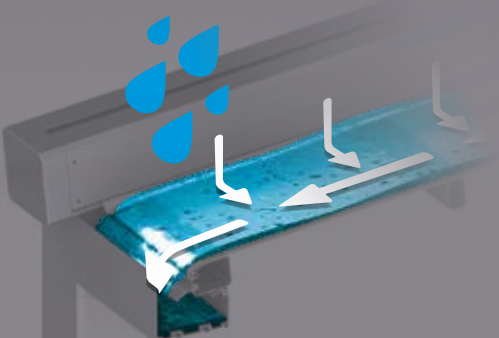
SYSTEM

Qatif is the perfect complement to the Dakhla pergola, allowing closure of the vertical sides of the structure. The cassette cover of Qatif is designed to slot into grooves in the horizontal beams of Dakhla, thus making installation easier and quicker, and ensuring a snug and secure fit without any gaps between components. This system also ensures an integrated, well finished aesthetic appeal.

RESISTANCE

WATER & WIND

Dakhla's custom designed Sealed Perimeter System means the structure remains waterproof, providing a dry comfortable outdoor space.



FINISHES

The coating used is certified Qualicoat class 2 (super durable)

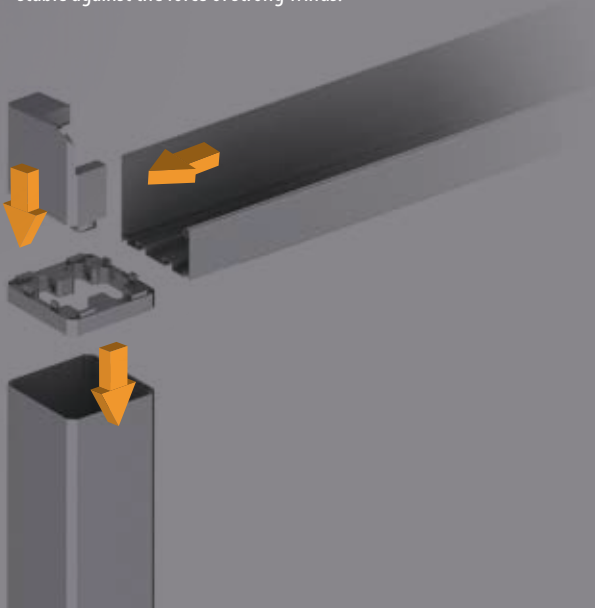


MORE FINISHES
AVAILABLE ON
REQUEST

STABILITY

& SOLIDITY

The amazing strength of our CNC manufactured joints, and brackets ensures that this pergola remains solid and stable against the force of strong winds.

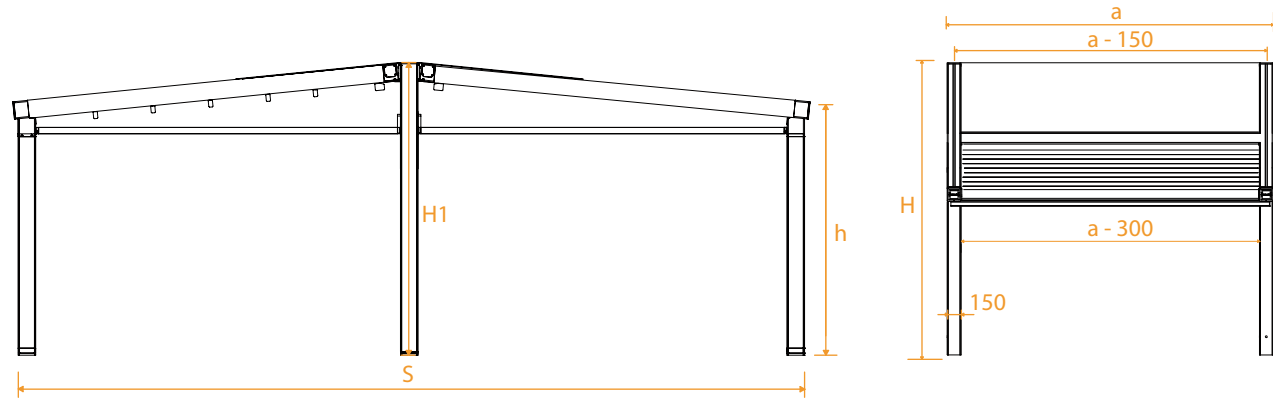


TECHNICAL

DETAILS

PROJECTION VIEW

DIMENSIONS

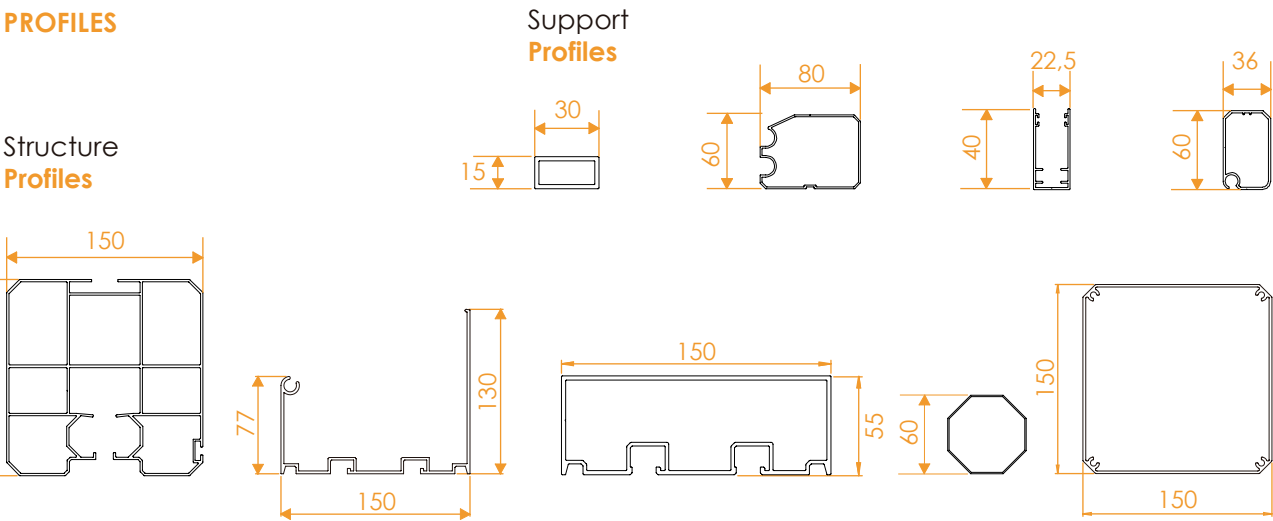


CONFIGURATIONS

Projection (S)	n° Profiles	X mm	Y mm	13,5 m 4 Guides			9 m 3 Guides		4.5 m 2 Guides	
				14 m						
3000	4	662	300							
4000	6	758	310							
5000	8	854	320							
6000	10	950	330							
7000	12	1046	340							

Contemplated for a 50 cm separation between support profiles, for each fabric.

PROFILES





WARRANTY
10
YEARS

A BRAND NEW **GENERATION** AWNINGS & PERGOLAS

by **nevaluz**



SAHARA  DAKHLA PILARES DOBLE