

ALUMINIUM CNC

Lasting Quality - A process guarantee that the raw material in all aluminum parts retains its purity and integrity, even to an atomic level.

Scientific tests and studies have proven the far superior strength of components manufactured with **CNC Machining** as opposed to the traditional molding process.

CNC machining aligns the aluminum unidirectionally, ensuring it remains 100% compact, and thus much more resistant to **impact, fatigue and corrosion.**

structure
ALUMINIUM INJECTION

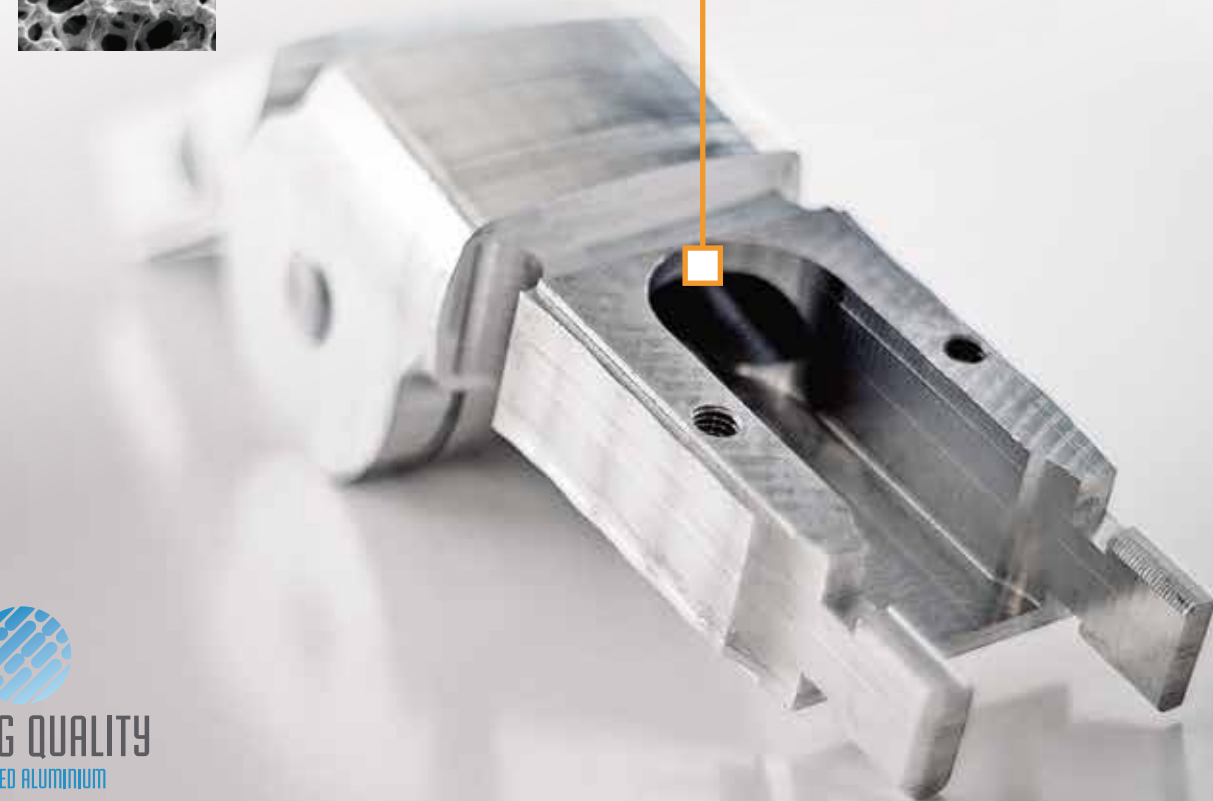
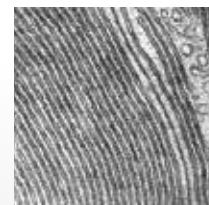


ROCKWELL HARDNESS TEST

INJECTION AL	40 - 50 HRB
MACHINING CNC	81 HRB

Procedure: : The Rockwell test determines the hardness by measuring the depth of penetration of an indenter under a large load compared to the penetration made by a pre-load. In these tests it was proven that the CNC component is twice as resistant as the injection molded part.

structure
CNC ALUMINIUM



WARRANTY
10
YEARS

A BRAND NEW **GENERATION** AWNINGS & PERGOLAS

by **nevaluz**





MULTIPLE
COLOUR COMBINATION



CAPACITY
& RESISTANCE

The TURPAN fold arm awning is specifically designed to cope with large dimensions, without compromising stability or performance. Innovative, state of the art CNC technology gives it unparalleled strength, ensuring durability and longevity.

NEW GENERATION AWNING

The TURPAN fold arm awning is designed to cover large dimensions. The industrial manufacture of its components, thanks to CNC Technology, allows it to reach, a width of up to 6 metres and a projection of 3.5 metres.

It has a contemporary and customizable design, with multiple options and colours, which allows it to easily be adapted to compliment different architectural styles.

The larger, more robust components incorporated in its structure, guarantee a high functionality and durability, classified with the highest possible wind resistance rating available on the market for similar products, Class 3, according to UNE EN 13561.

COMPONENTS CNC MACHINED ALUMINIUM

Due to CNC Machining, the resistance and quality of the components provide a level of structural strength that is unique in the industry, combined with the appeal of an integrated minimalist design.

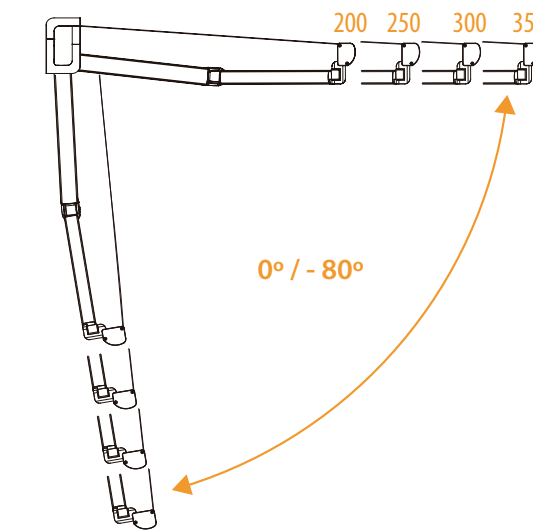


 COATED
ELBOW

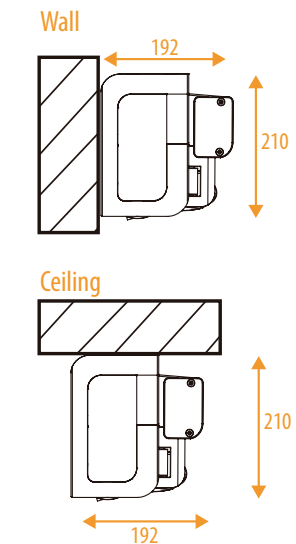
The aluminium arms are articulated by a single aluminium piece that ensures a stable, protected joint, which remains aesthetically pleasing and operationally sound. This exclusive element increases the overall functionality and durability as well as the wind resistance of the TURPAN.

TECHNICAL DETAILS

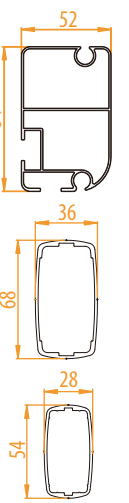
CONFIGURATION



INSTALLATION



PROFILES



ARM MEASUREMENTS DATA

Motorization only

	Arm 1,50	Arm 1,75	Arm 2	Arm 2,25	Arm 2,5	Arm 2,75	Arm 3	Arm 3,25	Arm 3,5
Minimal width	1,850	2,090	2,330	2,570	2,850	3,090	3,330	3,570	3,810

COMBINATION SAMPLES





WARRANTY
10
YEARS

A BRAND NEW **GENERATION** AWNINGS & PERGOLAS

by **nevaluz**



SAHARA  TURPAN